

Site Address :
Aurum Corporate Avenue
Survey No. 109,
Baner Road, Pune

COMPLETED PROJECTS



PLATINA, Phase-I



AURUM BLOOM TREE



AURUM AKRUTI AVENUE

LAUNCHING SOON



CREDITS

ARCHITECT
Sandeep Hardikar

RCC
Bhilare & Associates

LEGAL ADVISOR
Adv. Jitendra Pawar



8, Shreeniwas Classic, Above Corporation Bank, Baner Road, Baner, Pune - 411 045
Phone - 020 - 27291983, 27293618
E-mail: madan@aurumdevelopers.com Web: www.aurumdevelopers.com



The brochure is purely conceptual and not a legal offering. Nor will be part of the agreement. Number of floors & number of units may be revised. Developers reserve rights to amend the layout, plans, elevation, colour schemes, specifications, amenities etc.



The Business Hub
@ Baner



The Business Hub
@ Baner

Perfection finds a reflection

Location that is strategically fit – for business and employees, design that is set to leave lasting impressions, quality that stands the test of time, detailing that you'll experience in your day-to-day working. Aurum Corporate Avenue has all the essentials for your perfect office. Five plush floors. Flexibility to choose offices or spread over sizes ranging from 1000 to 13000 sq. ft. so that you can choose your office as per your business demands.

Also, you have an option of choosing an office with a wonderful terrace that overlooks greenery, for that right-break! With software companies and call-centers for company, the area gets a professional finesse and seriousness required for work. At the same time, residential surroundings along with all necessary facilities around the corner aid for making lives easier for professionals. And the proximity to Mumbai-Pune Expressway enhances business connectivity. All this, with the backing of a reputed name like Aurum Developers, will only leave you with success! Y.



First Floor Plan



AREA STATEMENT SQ.FT.

OFFICE NO.	OFFICE CARPET	TERRACE B/UP (50%)	SALEABLE = CARPET X 1.30
101	1075.00	-	1400.00
102	1170.00	-	1520.00
103	1083.00	362.00/181.00	1643.00



2nd, 3rd & 4th Floor Plan



AREA STATEMENT SQ.FT.

OFFICE NO.	OFFICE CARPET	SALEABLE = CARPET X 1.30
201,301,401,501	1120.00	1456.00
202,302,402,502	1170.00	1520.00
203,303,403,503	1135.00	1475.00



VALUE ADDED FEATURES:

Every feature is enhanced to add value, be it the security or adding a pleasing touch to the usually ignored compound wall. Aurum Developers knows that first impression is the last. And they've left no stone unturned to assure that it is the best.

- Provision of security & safety at Gate.
- Underground and overhead water tank, with automatic level controller
- Fire fitting provision as per PMC norms
- Attractive designer lobby for building at ground level entrance and on all floors
- Decorative compound wall

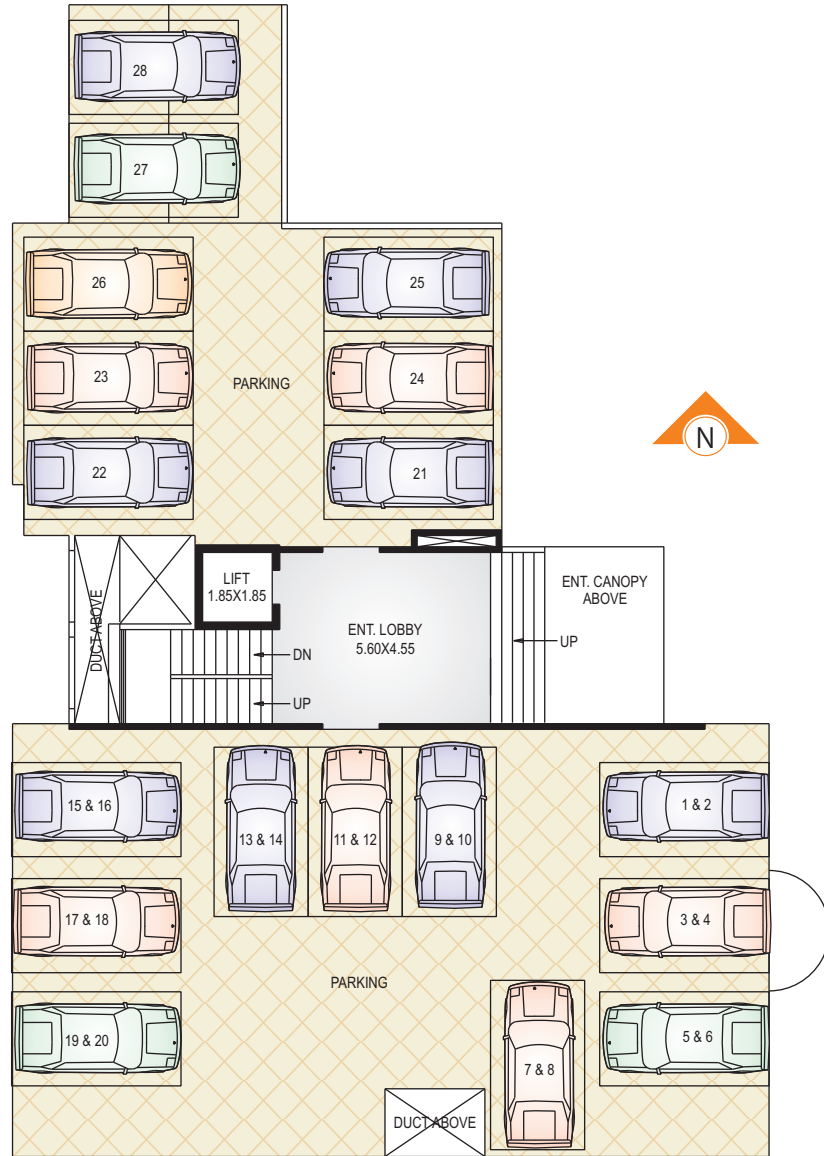
- Concrete internal roads & checkered tiles in parking area
- Letterbox & name board for each offices in entrance lobby
- Excellent elevation & ambience.

AMENITIES

After hands on experience on delivering international value, there's no looking back. The quality and aesthetics of the project make a statement for themselves.

- D.G. Backup for common area & lift only*
- Safety parapet walls at the terrace
- Covered Car Parking

Parking Floor Plan



Success Speaks

SPECIFICATIONS

Structure : □ Earthquake resistant R.C.C. Frame structure with Slab

Masonry : □ 6" thick external & internal walls

Plaster : □ Internal walls: Cement plaster with smooth finish

External walls : □ Sand face finishing plaster with glass cladding

Doors : □ Teakwood frame with flush door with standard fittings
□ Granite Marble door frame for toilets with water proof flush doors with standard fittings

Window : □ Aluminium powder coated windows

Flooring : □ 24"x24" Vitrified/equivalent tiles in office
□ 12"x12" Ceramic Anti skid flooring for toilets & terrace

Toilet & Pantry : □ Concealed plumbing W.C., Basin, Urinal with standard make fitting in toilets
□ Granite platform with S.S. Sink in Pantry.

Electrification : □ Aluminium Cable wiring with circuit breakers up to office

Painting : □ Exterior walls will be finished with superior quality cement Paints & internal walls with oil bond distemper in office

Lift : □ One automatic Lift of standard make for 6 passenger with stainless steel lobby.

OTHER AMENITIES 100% D.G. Backup Airconditions*

*at extra cost.

"Madan and his team were very helpful with the planning, build out and transition to our new office space. Aurum Developers' professional and timely ongoing maintenance efforts has ensured a clean and enjoyable work environment for our staff."



Jeanette D'Mello

General Manager, MMF Systems (India) Private Limited

